



Model No: _____

Desc: _____

MODEL NO. 66517 Flight Jet

PARTS LIST

DESCRIPTION	No. REQ'D	PART NUMBER
Support Leg	6	300751
Body Panel (Red)	2	304854**
Front Wing Panel (Blue)	1	304839**
Tail Wing Panel (Blue)	1	304840**
Rear Seat Panel (Yellow)	2	304841**
Dashboard Panel (Yellow)	1	304842**
Front Back Seat Panel (Yellow)	1	304843**
Wheel Panel (Black)	6	304844**
Landing Gear Panel (Yellow)	4	304845**
Wheel Support Panel (Yellow)	8	304846**
Driving Wheel Panel (Black)	2	304847**
Tail Circle Panel (Yellow)	2	304848**
Dashboard Circle Panel (Blue)	2	304849**
Star Panel (Yellow)	2	304850**
Logo Panel (Blue)	2	304851**
90° Angle Bracket	32	302334
Hardware Complete	1	304855
Propeller/Wheel Bushing	2	301152*
3/8" x 17 1/2" Stainless Steel Althread Rod	1	304642*
3/8" Barrel Nut	96	804804*
3/8" x 3/4" Carriage Bolt	64	800252*
3/8" Flat Washer	30	817410*
3/8" x 3/4" P.B.H.C.S. w/Patch	6	812052*
3/8" x 1 1/4" P.B.H.C.S. w/Patch	2	812051*
3/8" x 1 1/2" P.B.H.C.S. w/Patch	6	812053*
3/8" x 2 1/4" P.B.H.C.S. w/Patch	14	812056*
Plastisol-Coated Pipe	1	304853*
White Plastic Washer	2	304111*

Unless Otherwise Specified, All Units of Measure are Each

**Included in Hardware **Included in Flight Jet Kit #304856*

Warning: Small parts and hardware items may present a potential choking hazard. Promptly remove all unused parts from play area. Any bolt end protruding more than two full threads beyond the face of the nut causes risk of clothing entanglement. Promptly cut-off flush, file smooth, and treat to prevent corrosion.

Note: Peen Tee-Nuts and Flatwashers to match radius of pipe after assembly is complete.

Note: Loctite (supplied by others) should be used on all threaded hardware.

INSTALLATION INSTRUCTIONS:

IMPORTANT: Read through all instruction steps before starting. Do not fully tighten fasteners until all assembly is completed and satisfactory.

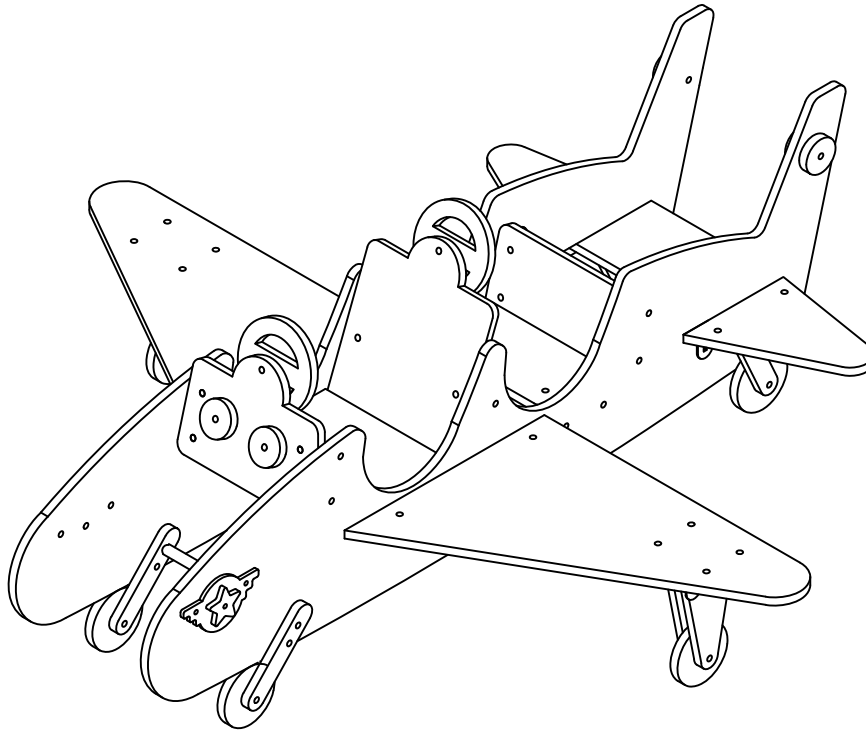
1. Dig footings as shown in Plan view.
2. Attach Wing Panels (B and C) to Body Panels (A) using Brackets (P), Bolts (S) and Nuts (V). Attach Star Panels (M), Logo Panels (N), Tail Circle Panels (K) to Body Panels (A) using Bolts (U, T1), Washers (Z), and Nuts (V).

MODEL NO. 66517 Flight Jet

3. Attach Wheel Panels (G), Brackets (P) to Landing Gears (H) using Bolts (S, X), Washers (Z), and Nuts (V). Attach this assembly to Wing Panel (B) using Bolts (S) and Nuts (V).
4. Attach Wheel Panels (G), Wheel Supports (I) to Body Panels (A) using Allthread (R), Pipe Spacer (R1), Bolts (X), Washers (Z), Plastic Washers (W) and Nuts (V) as shown in the assembly diagram.
5. Attach Dashboard (E), Front Back Seat (F), Rear Seat Panels (D) to Body Panels (A) using Brackets (P), Bolts (S) and Nuts (V). Attach Dashboard Circle Panels (L) to Dashboard (E) using Bolts (U), Washers (Z), and Nuts (V). Attach Driving Wheels (J) to Dashboard (E) and Front Back Seat (F) using Bolts (X), Washers (Z), Bushings (Q) and Nuts (V).
6. Attach 24" Support Posts to Wheel Panels (G) using Bolts (T), Washers (Z), and Nuts (V). Place the entire assembly in the dug footing holes and brace in position per the plan view diagram.
7. When the structure is completed and satisfactory, tighten all fasteners. Plumb and level the entire Fighter Jet and pour concrete within 4" to the top and taper away from Posts for good water drainage. Allow at least 48 hours curing time before permitting use. Also eliminate sharp points and sharp edges (burring) on installed hardware like bolts, nuts, etc.
8. Install resilient surfacing material within the use zone of play structure in accordance with ASTM specifications F1292 appropriate for the fall height of each structure. Refer to the Safety Guidelines

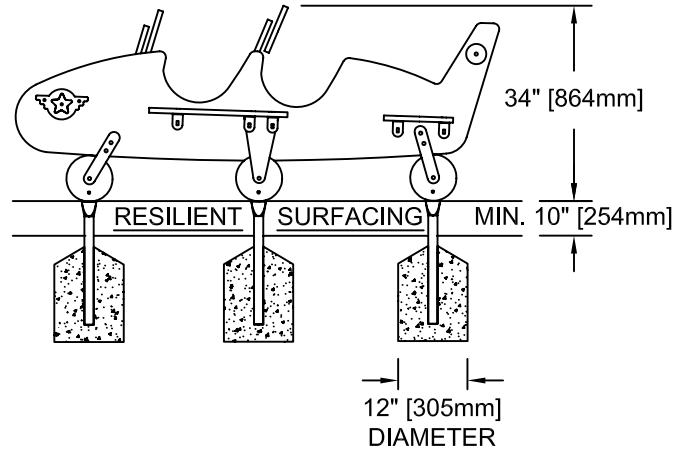
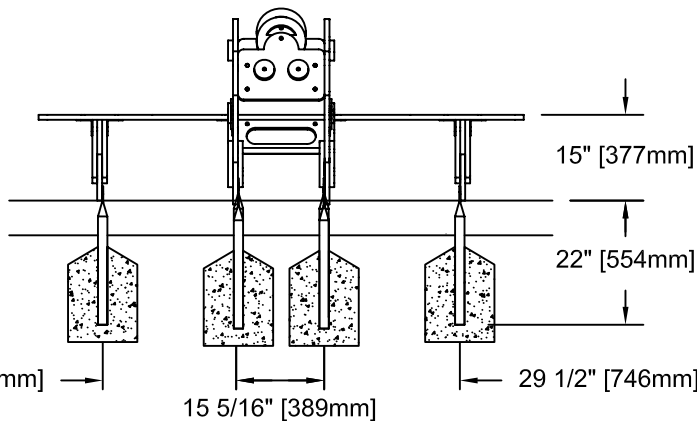
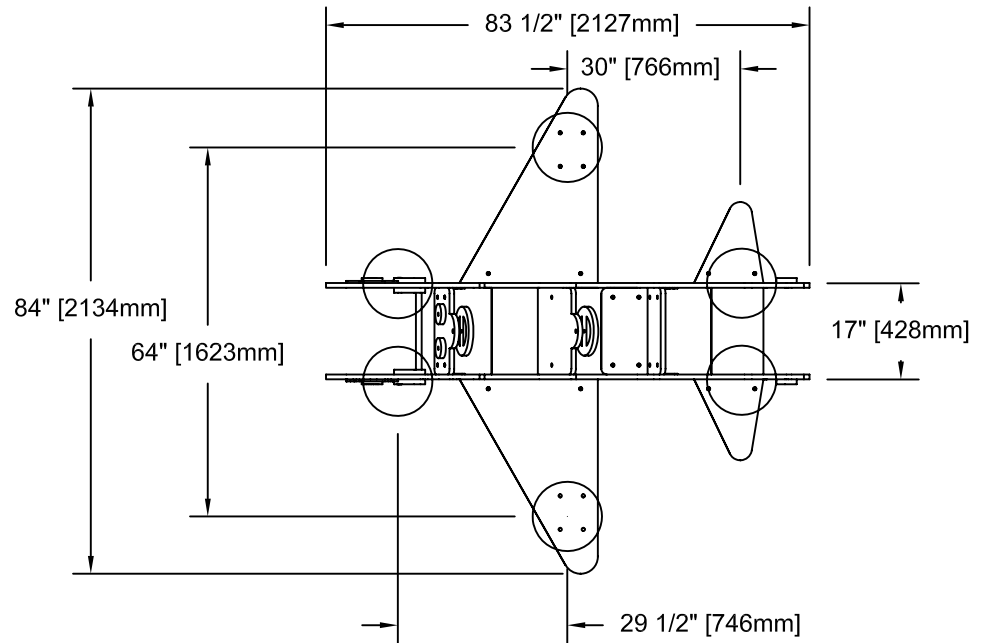
MAINTENANCE PROCEDURE:

Periodically check hardware for tightness, and tighten as necessary. Always check all parts for cracking, breakage or wear, and immediately put equipment out of service until any faulty parts found are repaired or replaced. Check for cracks, gouges or breakage on plastic, check for integrity of the plastic, keep plastic clean of any extraneous substances, verify that any deformation does not create entrapment as specified on ASTM F 1487 section 6. Check periodically resilient surfacing for appropriate depth and remove extraneous materials that could cause injury, infection, or disease. Maintain detailed installation, inspection, maintenance, and repair records for each public-use playground equipment.



FINISHED ASSEMBLY

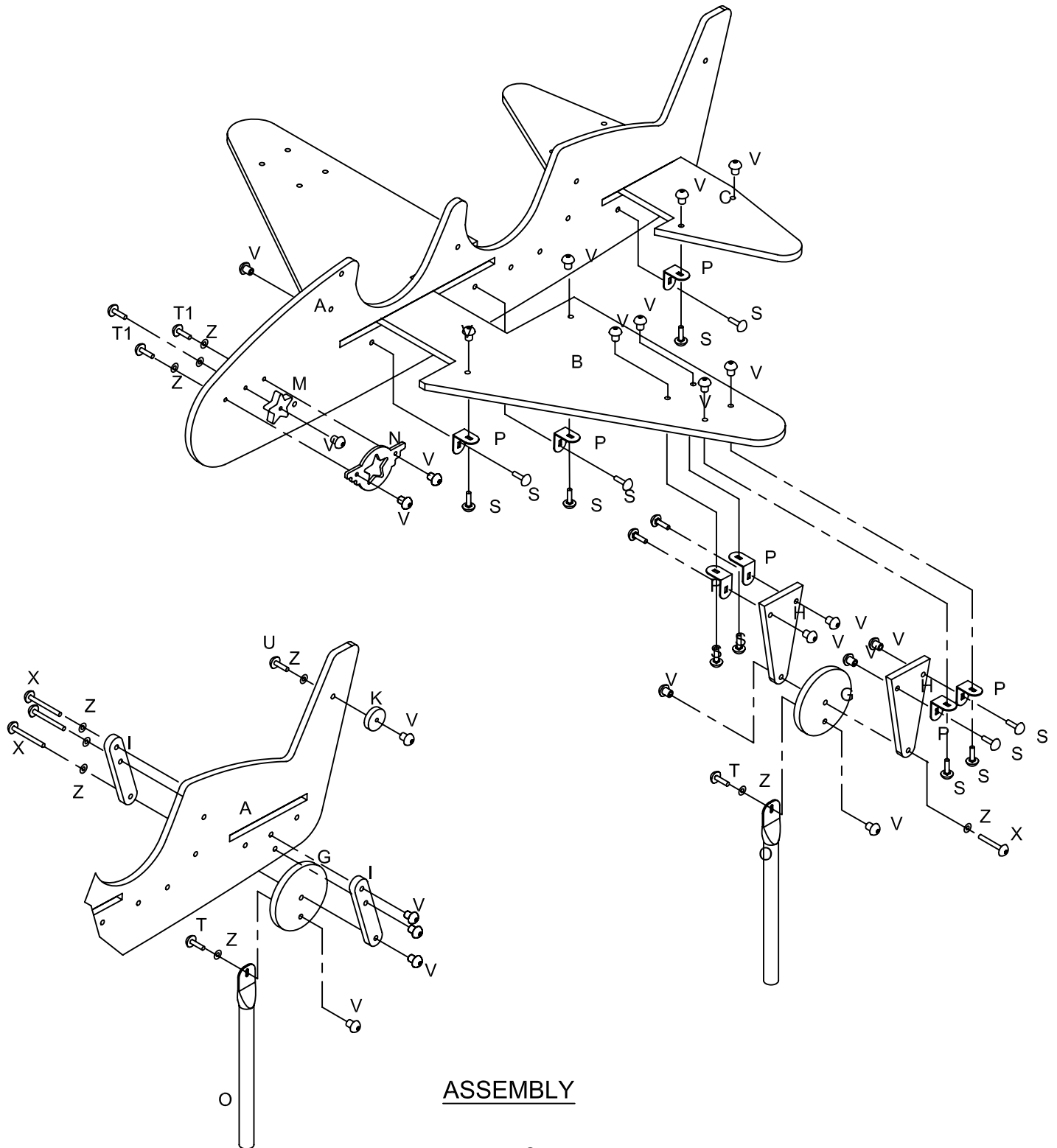
MODEL NO. 66517 Flight Jet



MATERIAL LIST:

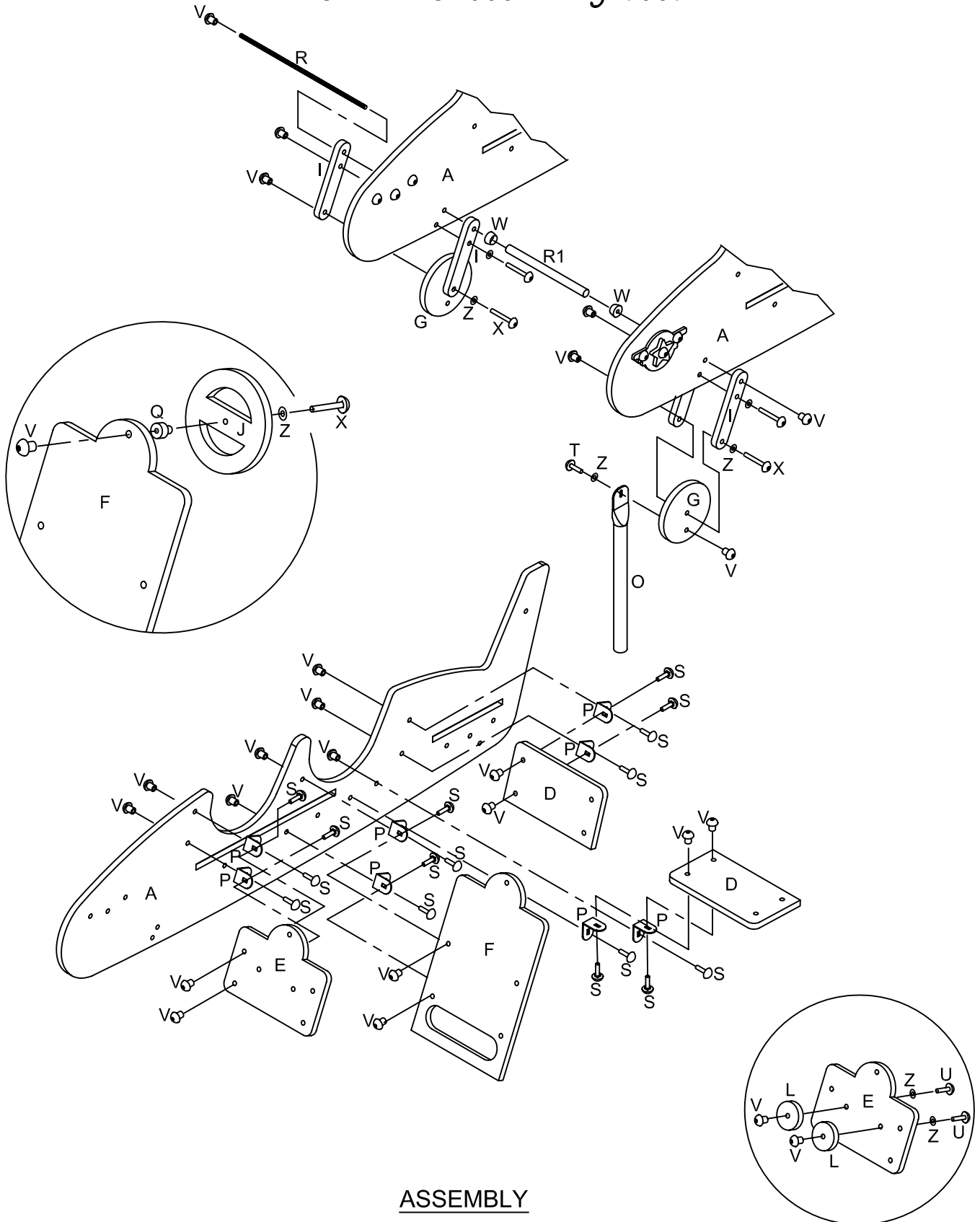
A = BODY PANEL	(RED)	(2)	O = SUPPORT LEG	(6)
B = FRONT WING PANEL	(BLUE)	(1)	P = 90° ANGLE BRACKET	(WHITE) (32)
C = TAIL WING PANEL	(BLUE)	(1)	Q = BUSHING	(2)
D = REAR SEAT PANEL	(YELLOW)	(2)	R = 3/8" ALTHREAD @ 17 1/2"	(1)
E = DASHBOARD PANEL	(YELLOW)	(1)	R1 = PIPE SPACER @ 13"	(1)
F = FRONT BACK SEAT PANEL	(YELLOW)	(1)	S = 3/8" X 3/4" CARRIAGE BOLT	(64)
G = WHEEL PANEL	(BLACK)	(6)	T = 3/8" X 3/4" HEX-PINNED BOLT	(6)
H = LANDING GEAR PANEL	(YELLOW)	(4)	T1 = 3/8" X 1 1/4" HEX-PINNED BOLT	(2)
I = WHEEL SUPPORT PANEL	(YELLOW)	(8)	U = 3/8" X 1-1/2" HEX-PINNED BOLT	(6)
J = DRIVING WHEEL PANEL	(BLACK)	(2)	V = 3/8" BARREL NUT	(96)
K = TAIL CIRCLE PANEL	(YELLOW)	(2)	X = 3/8" X 2-1/4" HEX-PINNED BOLT	(14)
L = DASHBOARD CIRCLE PANEL	(BLUE)	(2)	W = PLASTIC WASHER	(WHITE) (2)
M = STAR PANEL	(YELLOW)	(2)	Z = 3/8" FLAT WASHER	(30)
N = LOGO PANEL	(BLUE)	(2)		

MODEL NO. 66517 Flight Jet



ASSEMBLY

MODEL NO. 66517 Flight Jet



ASSEMBLY