



Model No: _____

Desc: _____

MODEL NO. 66507 Education Activity Center

PARTS LIST

DESCRIPTION	No. REQ'D	PART NUMBER
Store Wall Panel	1	304941
Driving Panel	1	306655
Lookout Panel	1	304945
Math Panel	1	312260
Bracing Panel	4	303464
Rung	3	312256
Plastic Math Block (Operators)	3	303026
Plastic Math Block (Equal Signs)	3	303027
Plastic Math Block (Numbers Only)	3	301942
Store Counter Panel	1	304949
Bubble Panel	1	305759
Bubble	1	305591
Steering Wheel Ass'y	1	163235
72" Pipe w/ Flange	2	306662
72" Pipe w/ 2 Flanges	4	306661
2 3/8" Post Cap	6	306682
Angle Bracket	4	302334*
Hardware Complete	1	306504
Self-Sealing Pop Rivet	12	137618*
3/8" Barrel Nut	58	804804*
3/8" Flat Washer	58	817410*
3/8" x 3/4" P.B.H.C.S. w/ Patch	50	812052*
3/8" x 1 1/2" P.B.H.C.S. w/ Patch	2	812053*
3/8" Lockwasher	2	817334*
3/8" Acorn Nut	2	804002*
3/8" x 2" P.B.H.C.S. w/ Patch	8	812055*

*Unless Otherwise Specified, All Units of Measure are Each
Included in Hardware

Warning: Small parts and hardware items may present a potential choking hazard. Promptly remove all unused parts from play area. Any bolt end protruding more than two full threads beyond the face of the nut causes risk of clothing entanglement. Promptly cut-off flush, file smooth, and treat to prevent corrosion.

Note: Peen Tee-Nuts and Flatwashers to match radius of pipe after assembly is complete.

Note: Loctite (supplied by others) should be used on all threaded hardware.

SPECIFICATIONS:

Panels: High-density 3/4" thick extruded solid polyethylene with color molded in and UV-stabilized.

Upright Posts: 2-3/8" O.D. galvanized steel with 3/16" thick Flanges welded with steel. Polyester powder-coated after fabrication.

Post Caps: Shall be fabricated from cast aluminum alloy and have a powder coat finish.

Steering Wheel: The Steering Wheel is molded of a durable proprietary plastic and shall withstand an impact of over 250 foot-pounds. A grease impregnated bronze bushing is pressed into the shaft to provide smooth turning. The steering wheel mounting bracket is formed of 3/16" thick steel and has a powder coat finish.

Gamepieces: 9" x 7" Cylinder rotationally molded, min. 1/8" thickness, medium-density polyethylene with ultraviolet (UV) light stabilizers, and graphics thermally transferred in the mold.

Bubble: Bubble made of clear polycarbonate 3/16" thickness 24" diameter.

Brackets: Formed from steel, powder-coated after fabrication.

Hardware: Primary hardware is stainless steel.

Weight: 279 lb. / 127 kg.



Model No: _____

Desc: _____

MODEL NO. 66507 Education Activity Center

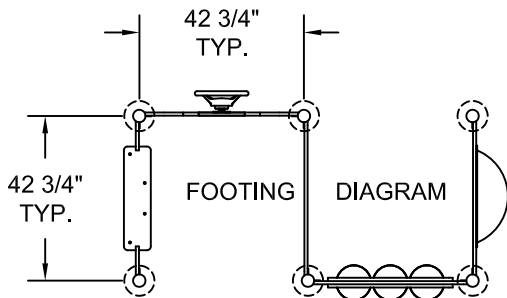
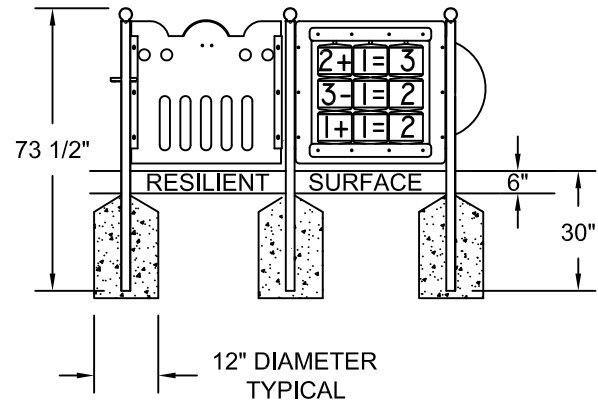
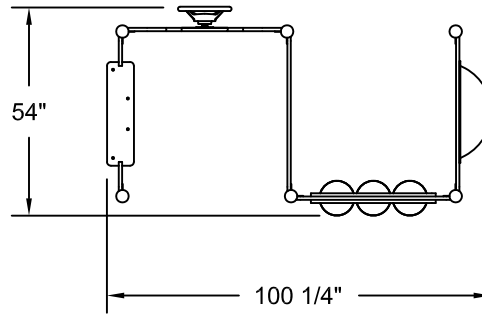
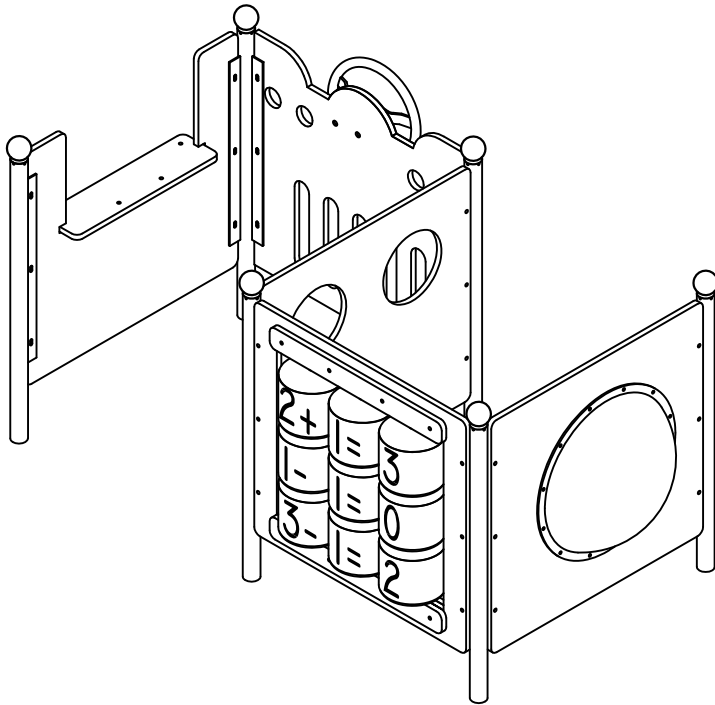
INSTALLATION INSTRUCTIONS:

1. Insert Rung in Plastic Math Block making sure the braille is at the bottom. Do this with the other two blocks on the rung. Use same procedure with other Rungs but use the Plastic Math Block (Operators) and Plastic Math Block (Equal Signs) in the appropriate spot.
2. Put the Rungs with the Plastic Math Blocks in the slots of the Math Panel. Then apply the Bracing Panel using 3/8" Barrel Nut, 3/8" x 2" P.B.H.C.S. w/Patch, and a 3/8" Flatwasher.
3. Dig footings as shown in the footing diagram. Locate posts in ground holes and brace in position. Attach Posts Caps using Self-Sealing Pop Rivets (Z) as shown in the assembly diagram.
4. Attach Store Counter Panel (F) to Store Wall Panel (A) using Angle Brackets (N) with Bolts (Q) and Nuts (S). Then attach the assembly to Posts (W) and (V) using Bolts (Q), Washers (T) and Nuts (S) as shown in the assembly diagram.
5. Attach Steering Wheel Ass'y(K) to Panel (B) using Bolts (P) Washers (T), Lockwashers (X) and Acorn Nuts (Y). Then attach the assembly to Posts (W) using Bolts (Q), Washers (T) and Nuts (S) as shown in the assembly diagram.
6. Attach Lookout Panel (C) to Posts (W) using Bolts (Q), Washers (T) and Nuts (S) as shown in the assembly diagram.
7. Attach Pre-Assembled Math Panel (D) to Posts (W) using Bolts (Q) Washers (T) and Nuts (S).
8. Attach Bubble and Bubble Panel (I) to Posts (V) and (W) using Bolts (Q), Washers (T) and Nuts (S) as shown in the assembly diagram.
9. Plumb and level the entire assembly. Tighten all fasteners and eliminate sharp points and sharp edges (burring) on installed hardware like bolts, nuts, etc. Pour concrete footings to within 4" to the top and taper away from support posts to allow proper water drainage. Allow curing at least 48 hours before use of the equipment is permitted.
10. Install resilient surfacing material within the use zone of play structure in accordance with ASTM specifications F1292 appropriate for the fall height of each structure. Refer to the Safety Guidelines.

MAINTENANCE PROCEDURE:

Periodically check hardware for tightness, and tighten as necessary. Always check all parts for breakage or wear, and immediately put equipment out of service until any faulty parts found are repaired or replaced. Check all metals for rust or paint loss and touch-up if necessary with paint. Check welded areas and verify integrity. Check for cracks or breakage on plastic. Check for openings on plastic junctions and use clear silicone to fill. Check for cracks, gouges or breakage on plastic, check for integrity of the plastic, keep plastic clean of any extraneous substances, verify that any deformation does not create entrapment as specified on ASTM F1487-98 section 6. Check periodically resilient surfacing for appropriate depth and remove extraneous materials that could cause injury, infection, or disease. Maintain detailed installation, inspection, maintenance, and repair records for each public-use playground equipment.

MODEL NO. 66507 Education Activity Center

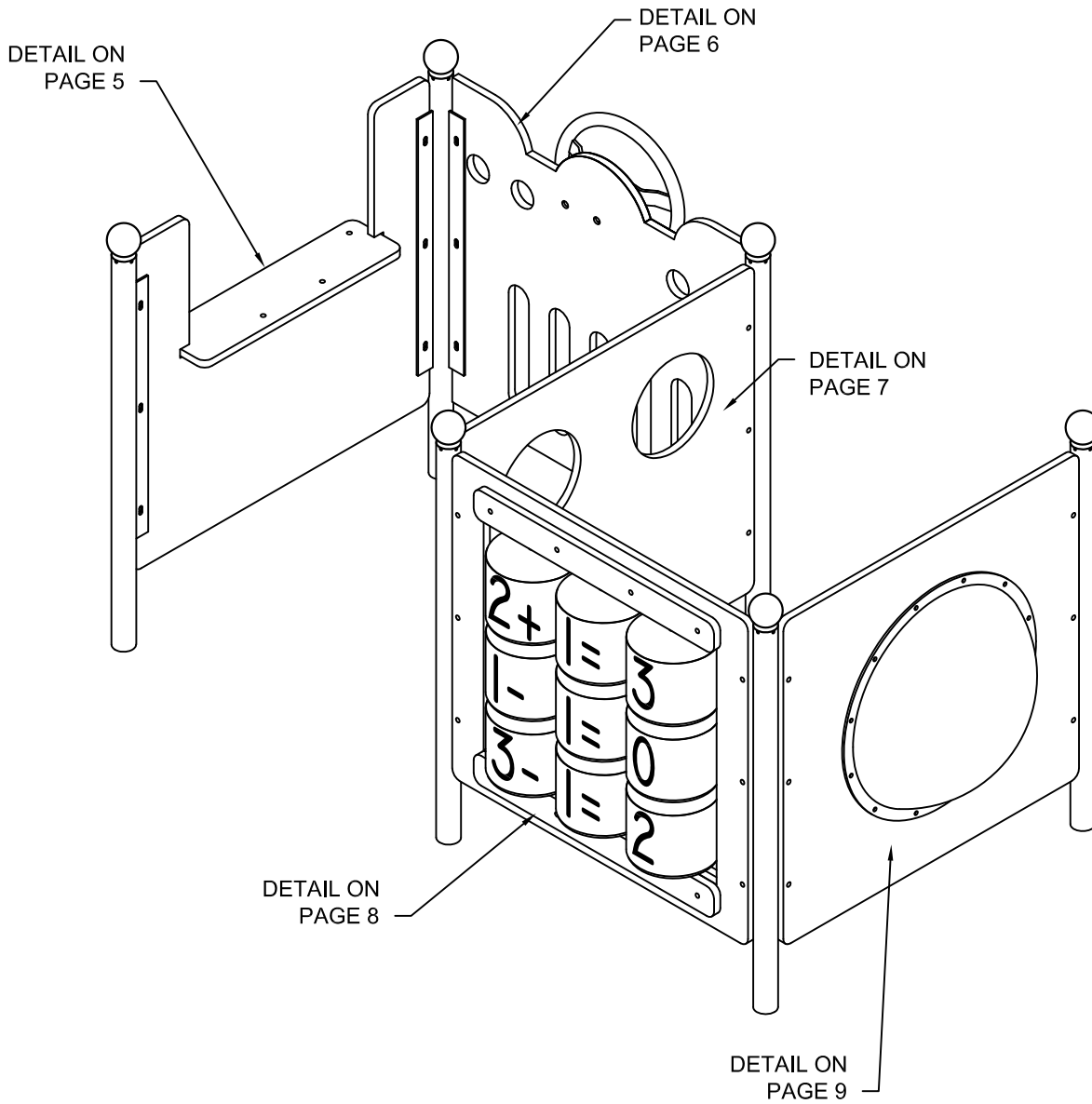


MATERIAL LIST:

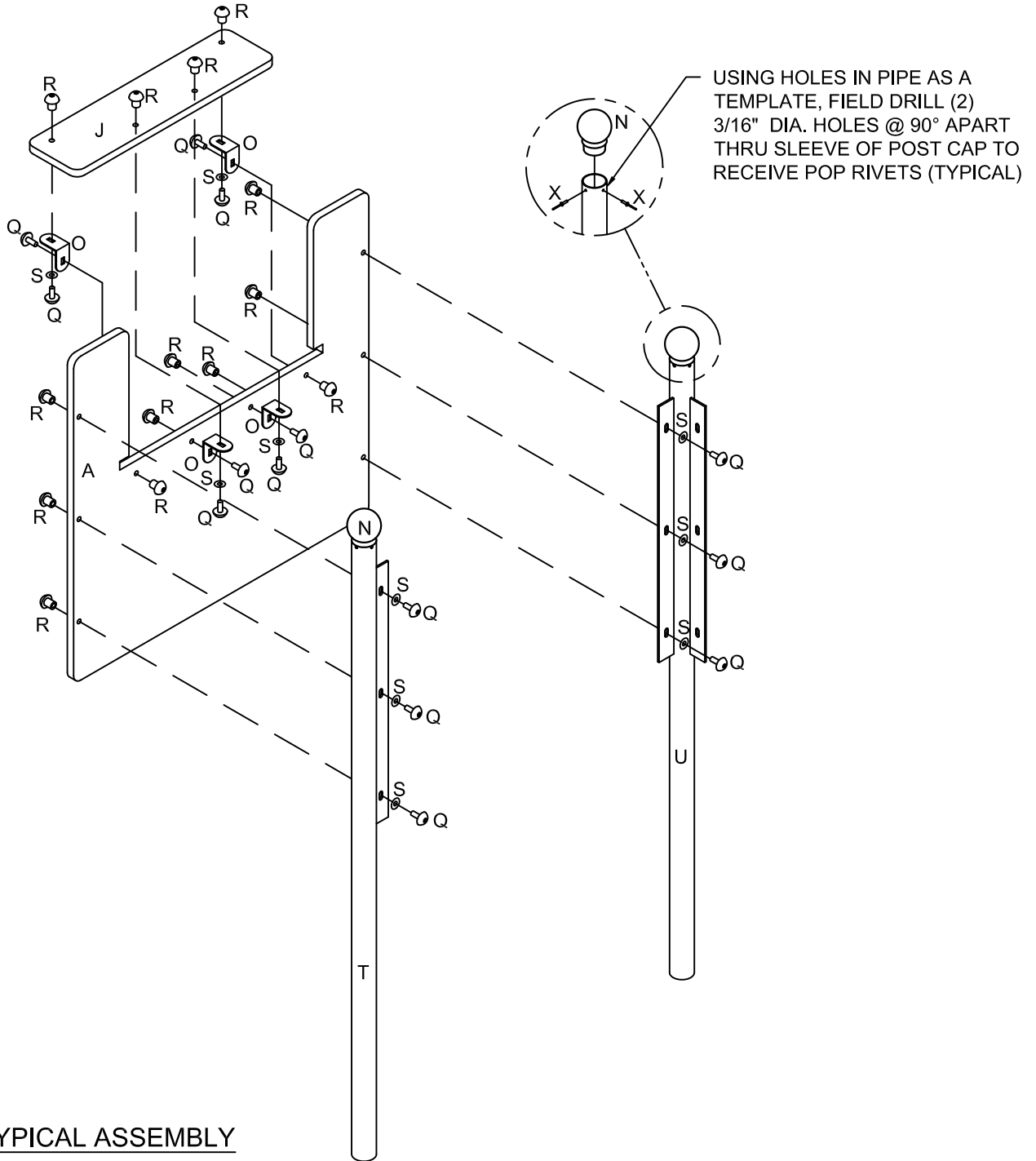
A = STORE WALL PANEL	(1)	M = STEERING WHEEL	(1)
B = DRIVING PANEL	(1)	N = 2 3/8" POST CAP	(6)
C = LOOK-OUT PANEL	(1)	O = ANGLE BRACKET (WHITE)	(4)
D = MATH WALL PANEL	(1)	P = 3/8"x1-1/2" HEX-PINNED BOLT	(2)
E = BRACING PANEL	(4)	Q = 3/8"x3/4" HEX-PINNED BOLT	(50)
F = RUNG	(3)	R = BARREL NUT	(50)
G = PLASTIC MATH BLOCK (OPERATORS)	(1)	S = 3/8" WASHER	(50)
H = PLASTIC MATH BLOCK (EQUAL SIGNS)	(1)	T = UPRIGHT POST W/ 1 FLANGE	(2)
I = PLASTIC MATH BLOCK (NUMBERS ONLY)	(1)	U = UPRIGHT POST W/ 2 FLANGES	(4)
J = STORE COUNTER PANEL	(1)	V = 3/8" LOCKWASHER	(2)
K = BUBBLE PANEL	(1)	W = 3/8" ACORN NUT	(2)
L = BUBBLE	(1)	X = SELF-SEALING POP RIVET	(12)
		Y = 3/8" x 2" P.B.H.C.S. w/PATCH	(8)

ELEVATION VIEW

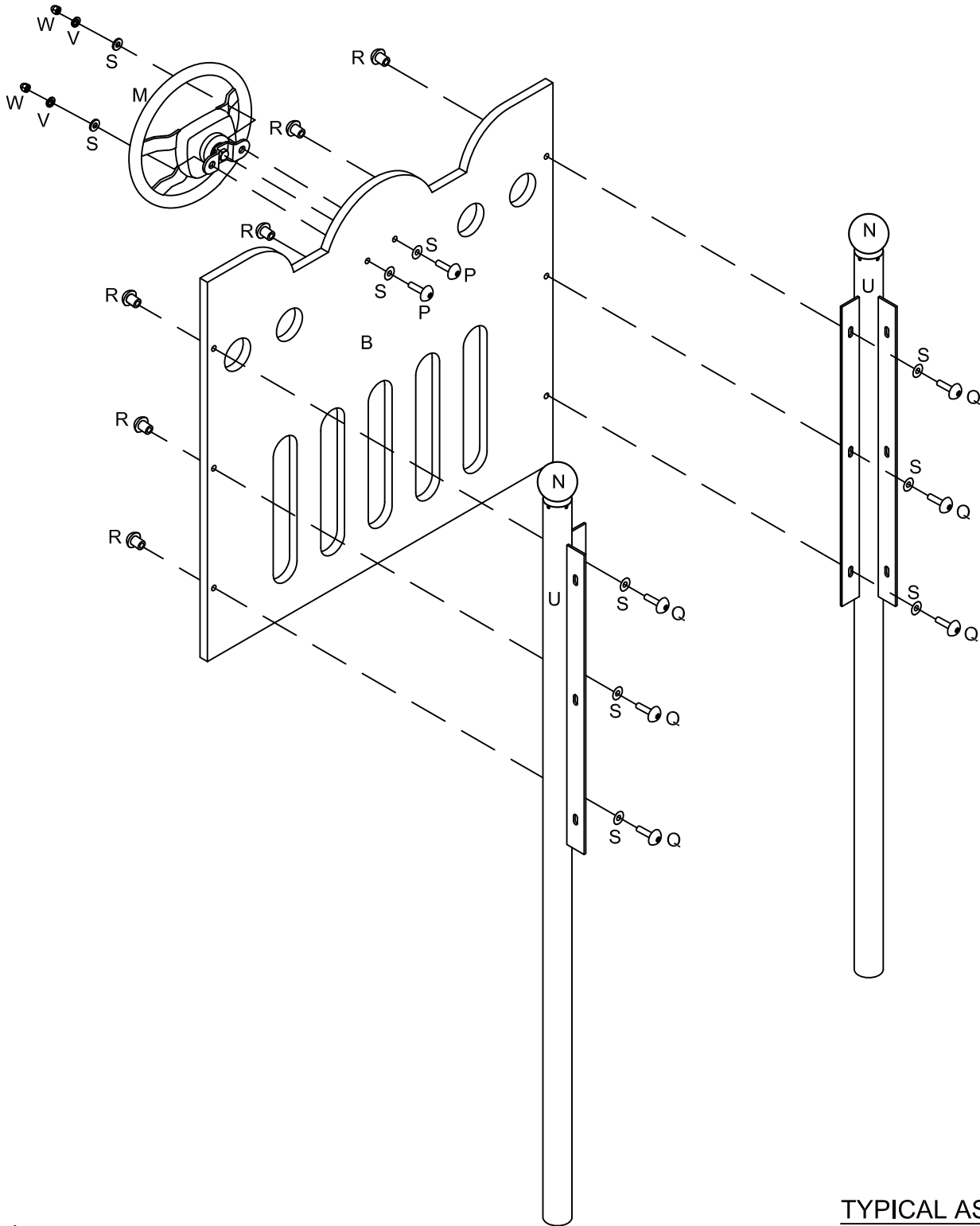
MODEL NO. 66507 Education Activity Center



MODEL NO. 66507 Education Activity Center

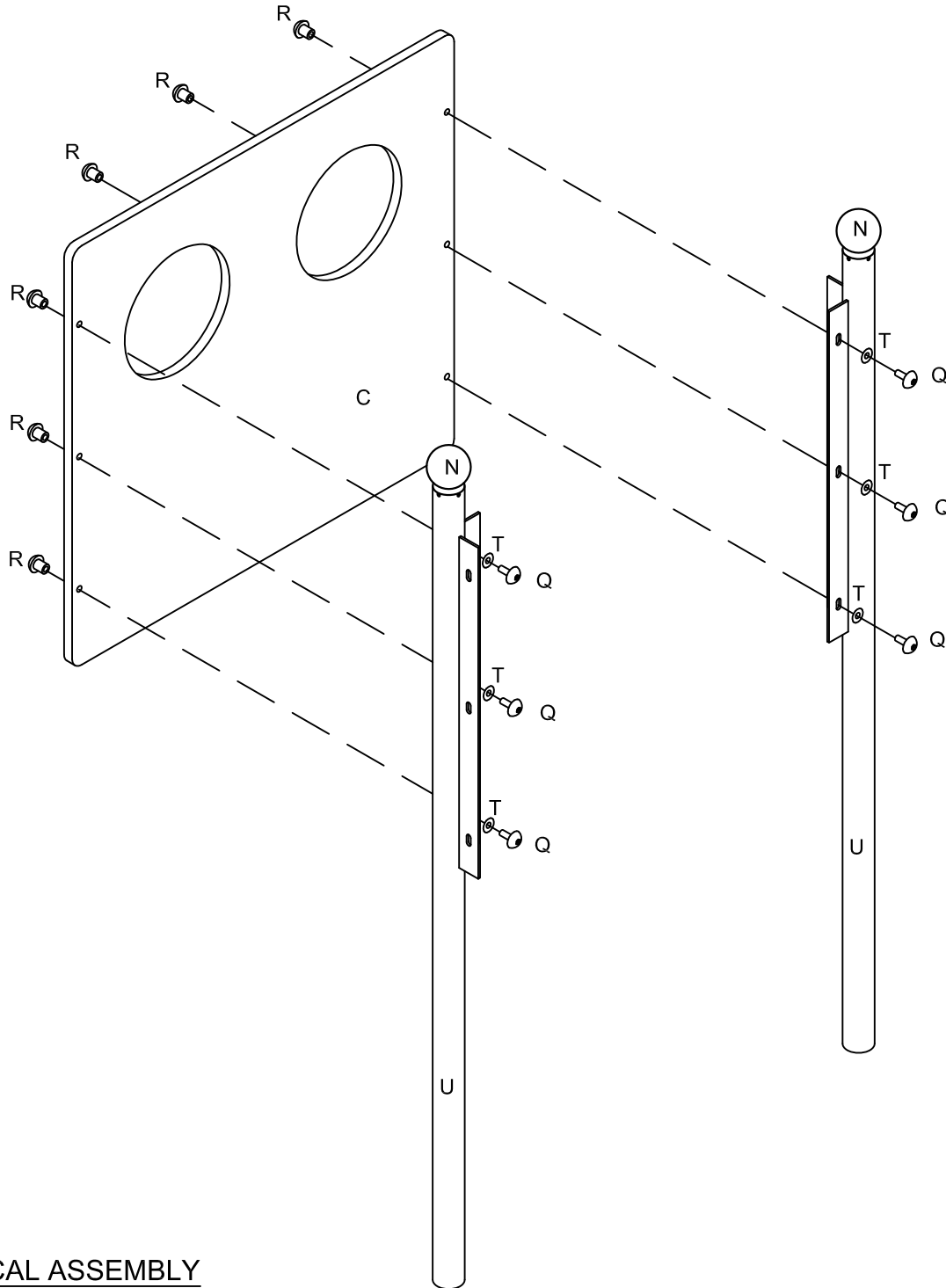


MODEL NO. 66507 Education Activity Center



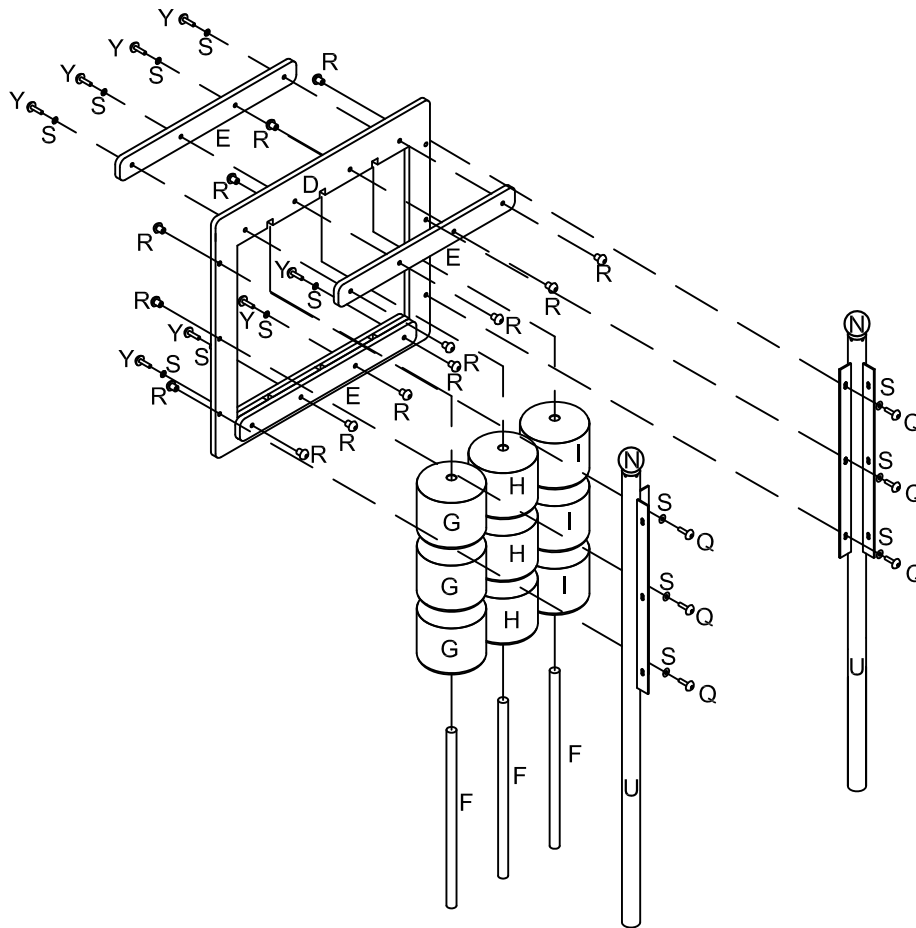
TYPICAL ASSEMBLY

MODEL NO. 66507 Education Activity Center



TYPICAL ASSEMBLY

MODEL NO. 66507 Education Activity Center



TYPICAL ASSEMBLY

MODEL NO. 66507 Education Activity Center

