



Model No: \_\_\_\_\_

Desc: \_\_\_\_\_

## MODEL NO.66506 Sailboat Sand Box

### PARTS LIST

DESCRIPTION	NO. REQ'D	PART NUMBER
Support Leg	5	300752
Support Pipe	3	202086
Sailboat Mast	1	305082
Back Panel- Red	1	305045**
Side Panel- Red	2	305046**
Front Panel- Red	2	305047**
Back Seat Panel- Yellow	1	305068**
Side Seat Panel- Yellow	2	305048**
Nose Seat Panel- Yellow	1	305049**
Sail Panel- Blue	1	305050**
Flag Panel- Beige	1	304409**
Big Steering Wheel Panel- Yellow	1	305052**
Small Steering Wheel Panel- Blue	2	301966**
90° Angle Bracket	23	302334
124° Angle Bracket	4	304002
90° Reinforcement Bracket	2	304811
Hardware Complete	1	305043
Propeller/Wheel Bushing	3	301152*
3/8" Barrel Nut	54	804804*
3/8" x 3/4" Carriage Bolt	39	800252*
3/8" x 1" Carriage Bolt	12	800253*
3/8" Flat Washer	29	817410*
3/8" Lockwasher	6	817334*
3/8" x 1 3/4" P.B.H.C.S. w/ Patch	9	812054*
3/8" x 1 1/2" P.B.H.C.S. w/ Patch	2	812053*
3/8" x 2 1/4" P.B.H.C.S. w/ Patch	5	812056*
3/8" Hex Nut	14	804053*
White Plastic Cap	15	304072*
White Plastic Washer	15	304071*

**Unless Otherwise Specified, All Units of Measure are Each**

**\*Included in Hardware**

**\*\*Included in Kit #305044**

**Warning: Small parts and hardware items may present a potential choking hazard. Promptly remove all unused parts from play area. Any bolt end protruding more than two full threads beyond the face of the nut causes risk of clothing entanglement. Promptly cut-off flush, file smooth, and treat to prevent corrosion.**

**Note: Peen Tee-Nuts and Flatwashers to match radius of pipe after assembly is complete.**

**Note: Loctite (supplied by others) should be used on all threaded hardware.**

### SPECIFICATIONS:

**Panels:** High-density 3/4" and .250" thick extruded solid polyethylene with color molded in and UV-Stabilized.

**Mast:** 3/16" x 2" x 30" flanges welded to 2-3/8" O.D. galvanized steel tubing, powder-coated after fabrication.

**Brackets:** Formed from 3/16" steel, powder-coated after fabrication.

**Hardware:** Primary hardware is stainless steel.

**Weight:** 306 lbs. / 13

**Minimum Area Required:** 18'-5"X 21'-0"

[5613mm x 6401mm]

### INSTALLATION INSTRUCTIONS:

**IMPORTANT:** Read through all instruction steps before starting. Do not attach Plastic Caps onto Plastic Washers until all assembly is completed and satisfactory. Do not fully tighten fasteners until ready to snap on Plastic Caps.

Dig footings as shown in Footing Diagram.



Model No: \_\_\_\_\_

Desc: \_\_\_\_\_

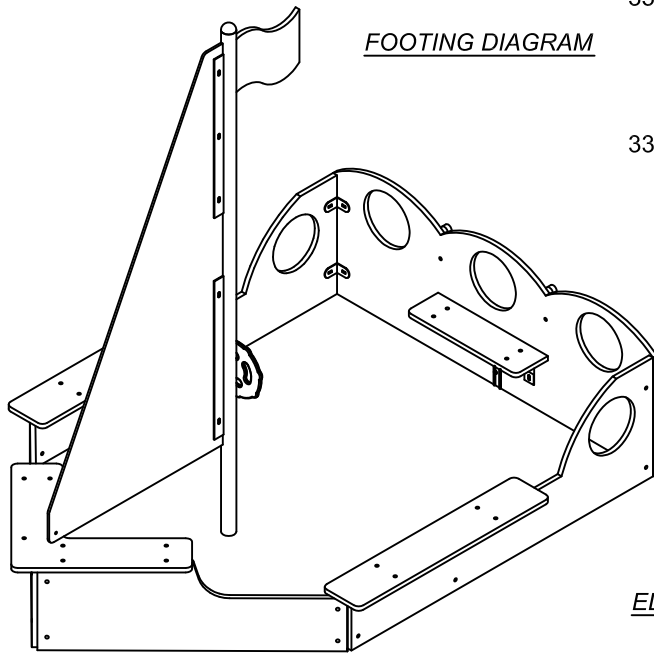
## MODEL NO.66506 Sailboat Sand Box

2. Attach Side Panels (B) to Back Panel (A) using Angle Brackets (M), 24" Posts (Y), Bolts (P) and Nuts (Q) as shown. Attach Small Steering Wheel (J) to Back Panel (A) using Bolts (P2), Bushing (N1), Washers (T) and Nuts (Q). Then attach Back Seat Panel (D) to Back Panel (A) using Seat Brackets (L), Bolts (P) and Nuts (Q) as shown in the assembly diagram.
3. Attach Side Seat Panels (E) to Side Panels (B) using Angle Brackets (M), Bolts (O and Q), Washers (U and T) and Nuts (R and Q). Then attach Front Panels (C) to Side Panel (B) using Angle Brackets (M1), Support Leg (Y), Bolts (P3) and Nuts (Q) as shown in the assembly diagram. Then enclose the Front Panels (C) using Angle Brackets (M), Support Leg (Y), Bolts (P3) and Nuts (Q) as shown in the assembly diagram.
4. Attach Front Seat Panels (F) to Front Panels (C) using Angle Brackets (M), Bolts (O and P), Washers (U and T) and Nuts (Q and R) as shown. Insert the Flag Panel (H) into cut slot on Mast (K) and fastened using Bolts (P2), Washers (T) and Nuts (Q). Attach Sail Panel (G) to Mast (K) and Front Seat Panels (F) using Bolts (O1), Washers (U and T) and Nuts (S). Attach Big Steering Wheel Panel (I) to Mast (K) using Bolt (P2), Bushing (N1), Washers (T) and Nuts (S) as shown in the assembly diagram.
5. Plumb, brace and level the assembly into position. Then pour concrete within 4" to the top and taper away from Posts for good water drainage. Allow at least 48 hours curing time before permitting use.
6. When the assembly is completed and satisfactory, tighten all fasteners and eliminate sharp points and sharp edges (burring) on installed hardware like bolts, nuts, etc. Snap on Plastic Caps (V) to Plastic Washers (U) by hand or using a rubber mallet. (NOTE: Do this only after all assembly is completed and satisfactory, as the Plastic Caps are designed to be very difficult to remove once they are snapped in place. If removal becomes necessary, use the edge of a utility knife to careful pry of.)
7. Install resilient surfacing material within the *use zone* of play structure in accordance with ASTM specifications F1292 appropriate for the fall height of each structure. Refer to the Safety Guidelines.

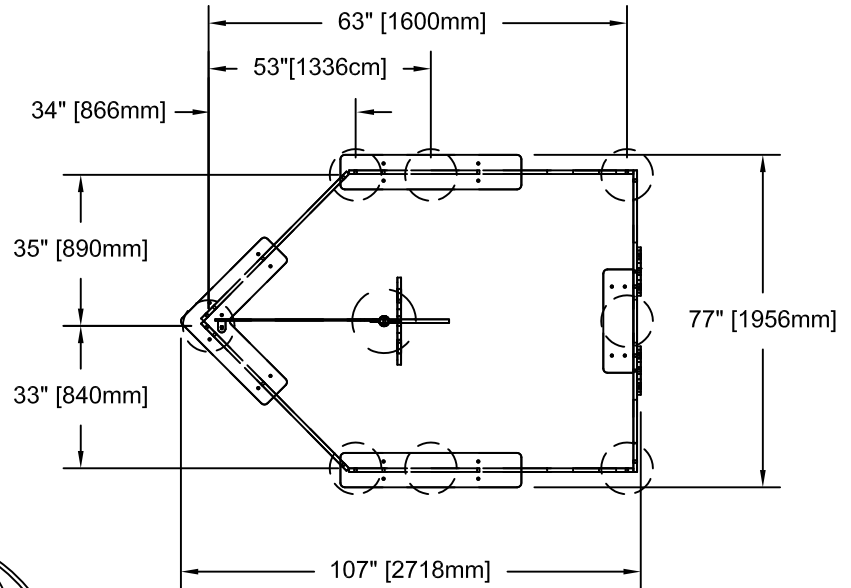
### **MAINTENANCE PROCEDURE:**

Periodically check hardware for tightness, and tighten as necessary. Always check all parts for breakage or wear, and immediately put equipment out of service until any faulty parts found are repaired or replaced. Check for rust, paint peeling and touch-up if necessary with paint. Check for welded areas and verify integrity. Check for cracks, gouges or breakage on plastic, check for integrity of the plastic, keep plastic clean of any extraneous substances, verify than any deformation does not create entrapment as specified on ASTM F 1487-98 section 6. Check periodically resilient surfacing for appropriate depth and remove extraneous materials that could cause injury, infection, or disease. Maintain detailed installation, inspection, maintenance, and repair records for each public-use playground equipment.

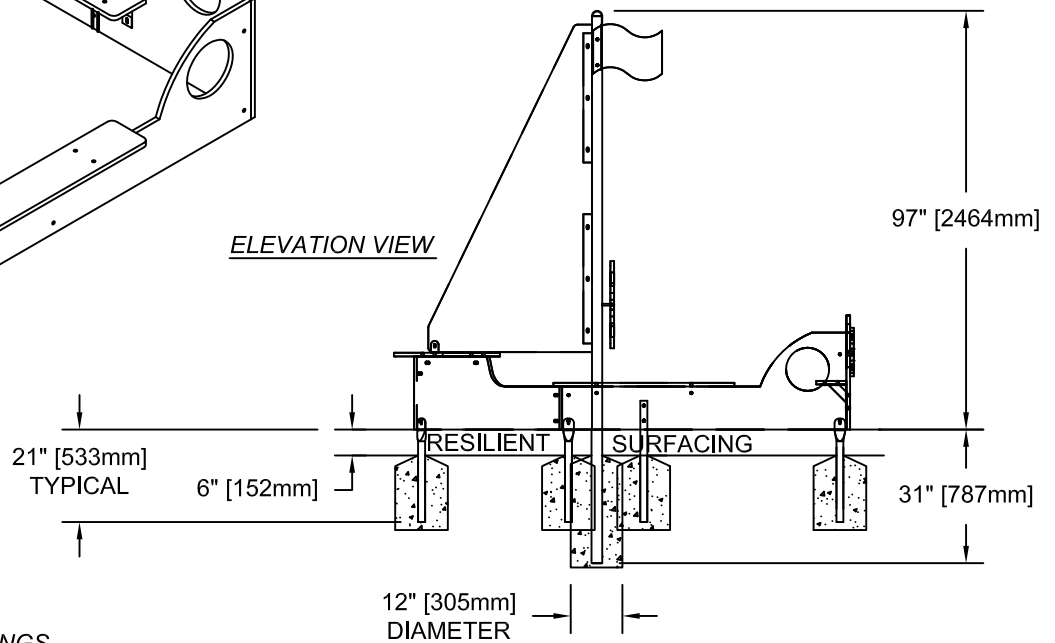
## MODEL NO.66506 Sailboat Sand Box



FOOTING DIAGRAM



ELEVATION VIEW

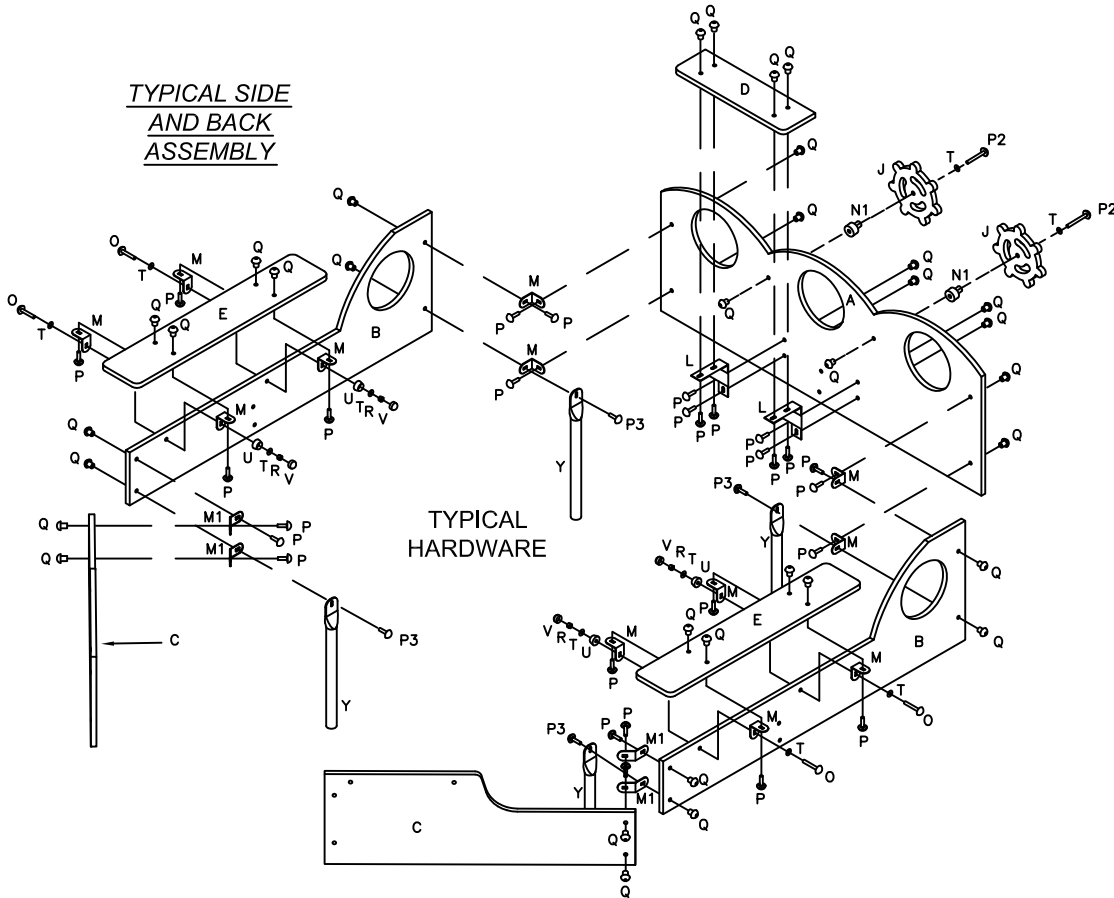


**LEGEND FOR ASS'Y DRAWINGS**

A = BACK PANEL	(RED)	(1)	N1 = PROPELLER/WHEEL BUSHING (ALUM.)	(3)
B = SIDE PANEL	(RED)	(2)	O = 3/8"x1-3/4" HEX-PINNED BOLT	(8)
C = FRONT PANEL	(RED)	(2)	O1 = 3/8"x1-1/2" HEX-PINNED BOLT	(6)
D = BACK SEAT PANEL	(YELLOW)	(1)	P = 3/8"x3/4" CARRIAGE BOLT	(39)
E = SIDE SEAT PANEL	(YELLOW)	(1)	P2 = 3/8"x2-1/4" HEX-PINNED BOLT	(5)
F = NOSE SEAT PANEL	(YELLOW)	(1)	P3 = 3/8"x1" CARRIAGE BOLT	(12)
G = SAIL PANEL	(BLUE)	(1)	Q = BARREL NUT	(54)
H = FLAG PANEL	(BEIGE)	(1)	R = 3/8" NUT	(14)
I = BIG STEERING WHEEL PANEL	(YELLOW)	(1)	T = 3/8" FLAT WASHER	(29)
J = SMALL STEERING WHEEL PANEL	(BLUE)	(2)	T1 = 3/8" LOCK WASHER	(6)
K = MAST	(BLUE)	(1)	U = PLASTIC WASHER	(15)
L = SEAT BRACKET	(WHITE)	(2)	V = PLASTIC CAP	(15)
M = 90° ANGLE BRACKET	(WHITE)	(23)	Y = SUPPORT LEG	(5)
M1 = 124° ANGLE BRACKET	(WHITE)	(4)	Z = SUPPORT PIPE	(3)

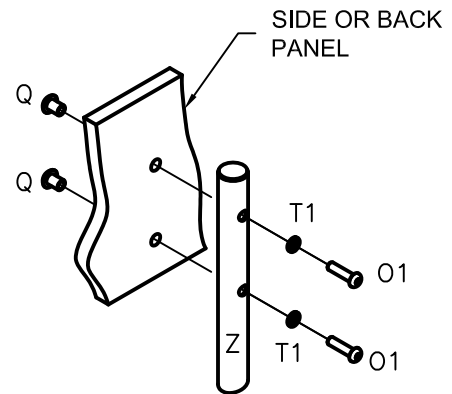
## MODEL NO.66506 Sailboat Sand Box

TYPICAL SIDE AND BACK ASSEMBLY

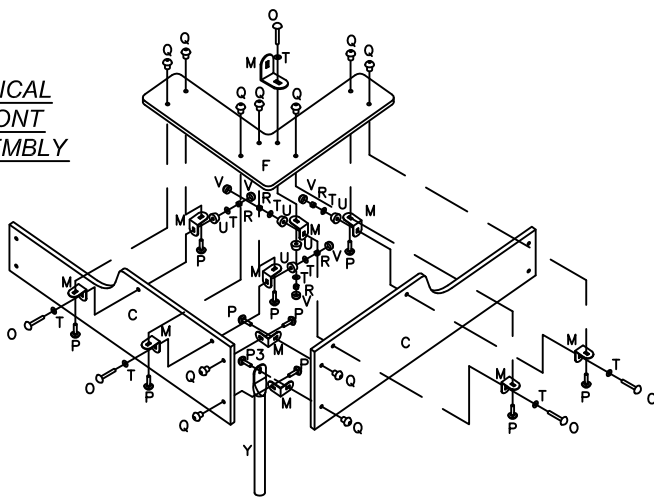


TYPICAL HARDWARE

TYPICAL SUPPORT PIPE ASSEMBLY



TYPICAL FRONT ASSEMBLY



## MODEL NO.66506 Sailboat Sand Box

